

Director's Message

Dear CCPR Community,

Happy fall!

We have a fantastic fall schedule of seminars and workshops, most of which are being held in-person. While we hope that you can attend the seminars in-person, we will also offer a remote option.

The renovation of our space at CCPR is nearing completion. Thanks for your patience as we update our space. We hope you enjoy the new look and look forward to resuming our seminars in our regular seminar room in the winter quarter!

This newsletter highlights some of our ongoing activities and the accomplishments of our affiliates. Please continue to inform us of your news so that we can feature your work and accomplishments: <https://ccpr.ucla.edu/category/news/>.

Best wishes for a happy and healthy fall quarter.

Jennie E. Brand
 Director, CCPR

Fall Quarter Seminar Schedule

October 5, 2022: Feinian Chen, Johns Hopkins University, "Reconfiguring Social Disconnectedness and Its Links to Psychological Well-Being Among Older Adults in Rural China"

October 12, 2022: Alexandra Killewald, Harvard University, "Can Changing Family Demographics Help Explain the Narrowing Gender Wage Gap?"

October 19, 2022: CCPR Computing Resources Workshop

October 26, 2022: Kareem Haggag, UCLA, "The Effects of Racial Segregation on Intergenerational Mobility: Evidence from Historical Railroad Placements"

November 2, 2022: State-created Categories, Displacements and Possibilities from the Margins: A conversation with demography (Panel)

November 9, 2022: Amanda Glassman, Center for Global Development, "Breakthrough to Policy Use: Reinvigorating Impact Evaluation for Global Development"

November 16, 2022: Zack W. Almquist, University of Washington, "TBD"

November 30, 2022: Professional Development Series: Reproducibility and Transparency in Population Research

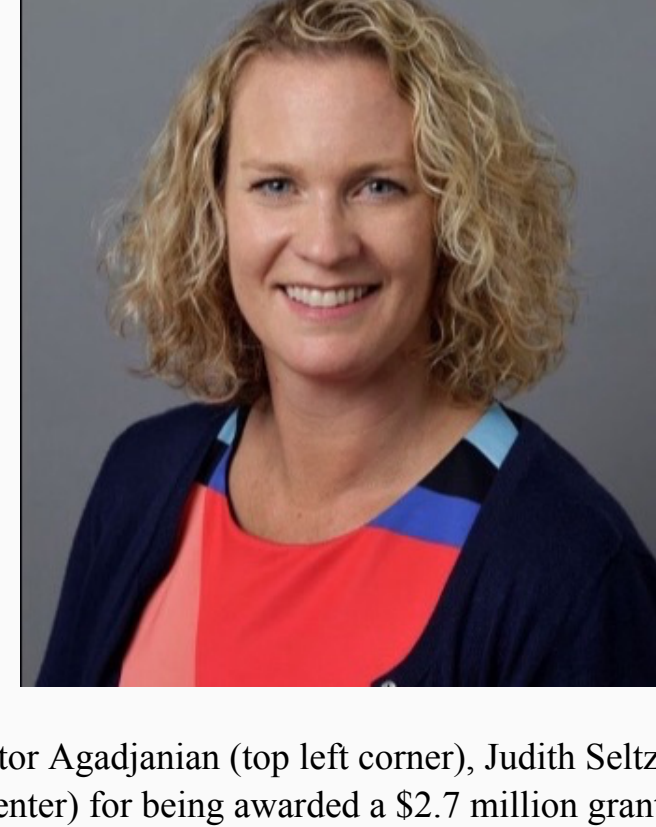
[Seminar Schedule](#)

Research Spotlights

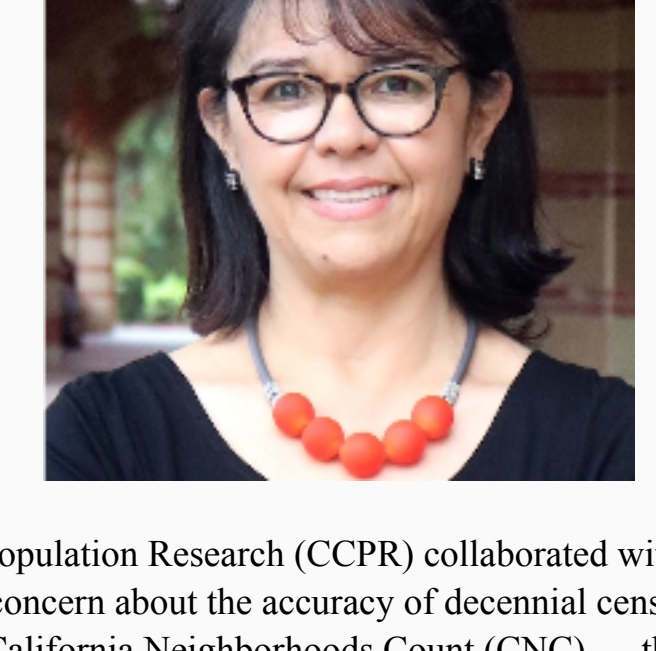
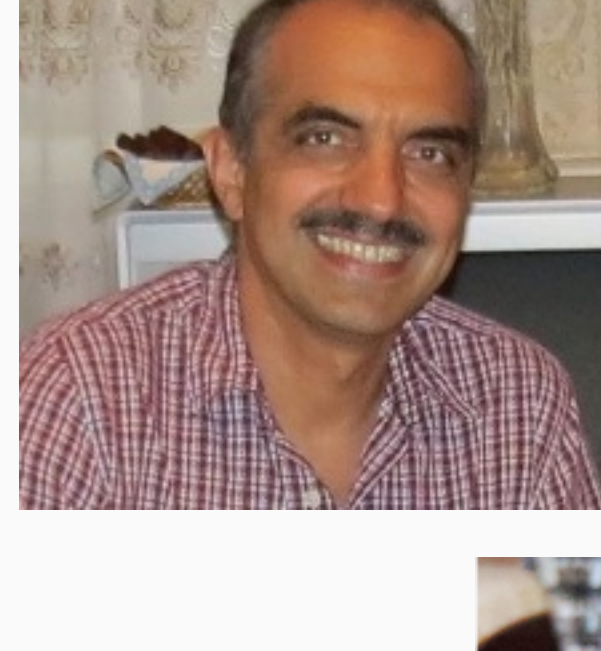
The National Institute of Health honored CCPR Faculty Affiliate Ilan H. Meyer with the 2022 Distinguished Investigator Award. This award recognized Ilan's substantial and outstanding research in sexual and gender minority health.



Dr. Jessica Gipson, Professor of Community Health Sciences at the UCLA Fielding School of Public Health was appointed director of the Bixby Center on Population and Reproductive Health and the Fred H. Bixby Professor of Population and Reproductive Health Science. Dr. Gipson's research addresses the effects of sociocultural and political contexts on sexual and reproductive behavior and health outcomes in the United States and globally.



Congratulations to Drs. Victor Agadjanian (top left corner), Judith Seltzer (top right corner), and Cecilia Menjivar (bottom center) for being awarded a \$2.7 million grant by the National Institute of Aging for "Women's Social Ties and Psychosocial Well-Being in a Resource-Limited Patriarchal Setting: A Longitudinal Perspective."

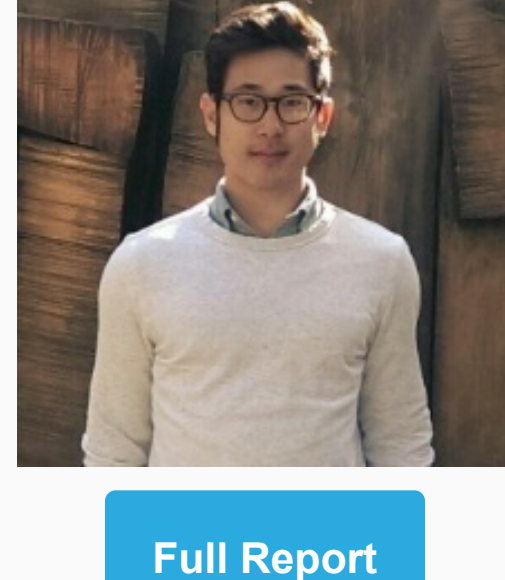
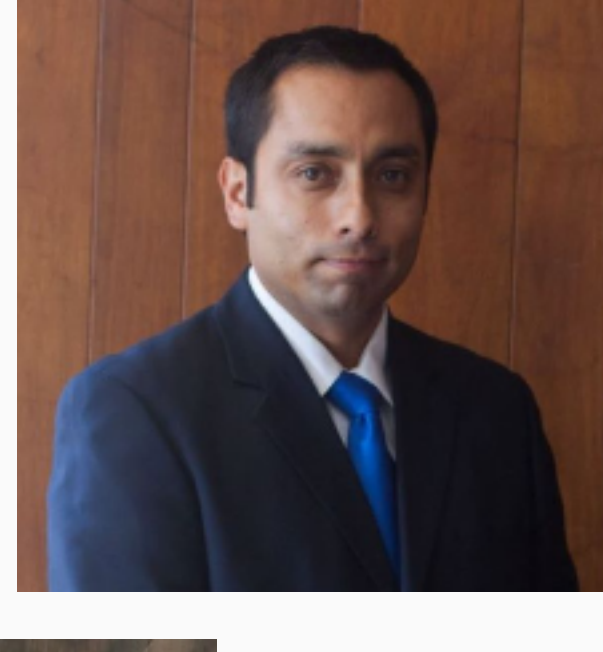


The California Center for Population Research (CCPR) collaborated with researchers from RAND to address a long-standing concern about the accuracy of decennial census data. Together, CCPR and RAND conducted the California Neighborhoods Count (CNC) — the first-ever independent, survey-based enumeration to directly evaluate the accuracy of the U.S. Census Bureau's population totals for a subset of California census blocks.

The five major findings from the report are the following:

- The CNC population estimates are broadly similar to the 2020 Census numbers, and the study does not offer evidence that invalidates the census.
- The CNC estimated around 3% fewer individuals than the 2020 Census counted.
- The CNC may have estimated fewer individuals identifying as Asian alone than the census. However, it cannot confirm an undercount or overcount of subgroups within blocks.
- The CNC identified approximately 5 percent more housing units than the 2020 Census.
- The CNC's complete in-person address canvassing may have contributed to a higher housing unit count than in the census, which relied more on in-office canvassing.

The CCPR faculty and staff involved in this report include Jennie Brand (top left corner), Hiram Beltran-Sanchez (top right corner), and Michael Tzen (bottom center).

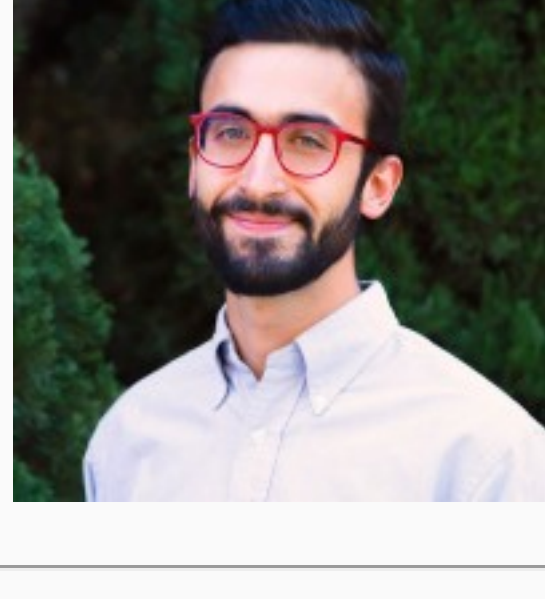
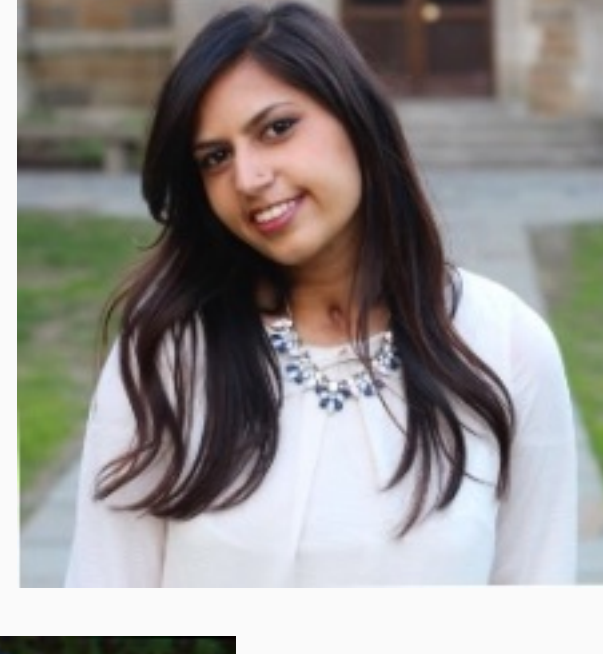
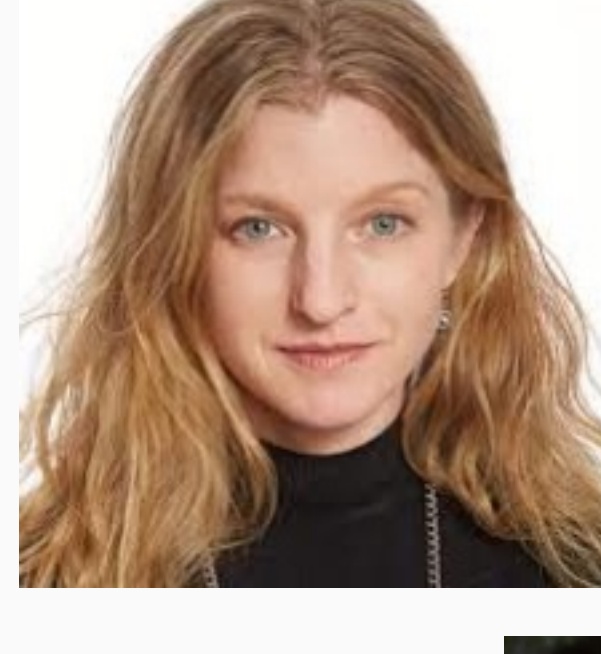
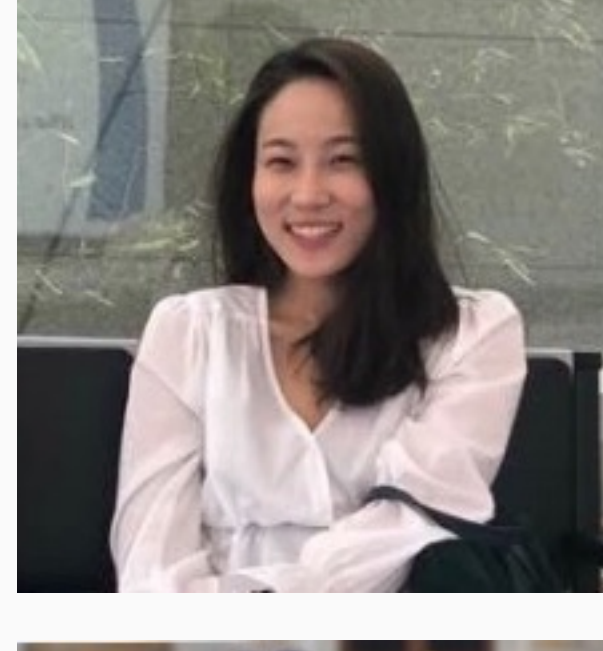
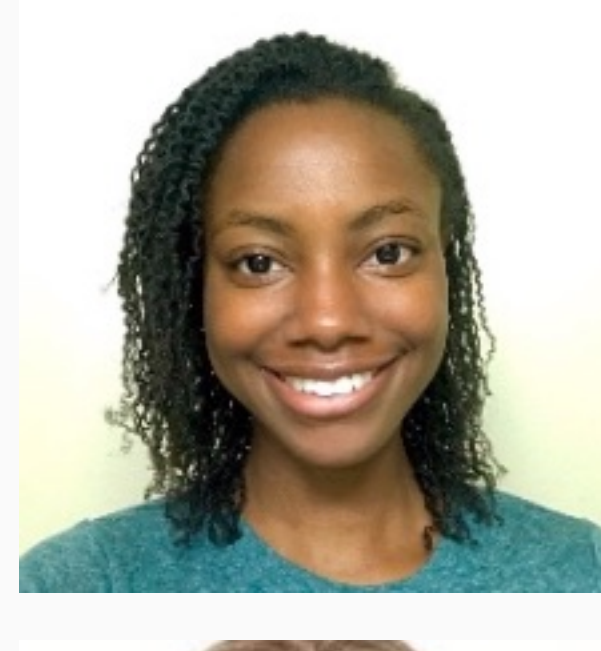


[Full Report](#)

CCPR 2022-2023 Trainees

Congratulations to Ph.D. students Joni Brown (Health Psychology) (top left corner), Ahyeon Cho (Sociology) (top right corner), Heidi West (Health Policy and Management) (center left), Angubeen Khan (CHS) (center right), and Giovanni Righi (Economics) (bottom center) for being selected as a 2022-2023 CCPR Trainee.

The CCPR Traineeship is funded by the Eunice Kennedy Shriver National Institute of Child Health and Human Development. The program emphasizes the multi-disciplinary character of contemporary demographic research by exposing trainees to an integrated program of research in economics, sociology, and public health. The training program is a mixture of formal course work and practical research experience, designed to provide students with a firm grounding in a social science discipline, a rich understanding of the multi-disciplinary range of research in demography, and experience and skills in designing, conducting, and presenting scientific work.



Selected Faculty and Student Publications

Ahearn, C. E., Brand, J. E., & Zhou, X. (2022). How, and For Whom, Does Higher Education Increase Voting?. *Research in Higher Education*, 1-24.

Bailey, M. J., Leonard, S. H., Price, J., Roberts, E., Spector, L., & Zhang, M. (2022). Breathing new life into death certificates: Extracting handwritten cause of death in the LIFE-M project. *Explorations in Economic History*, 101474.

Beltrán-Sánchez, H., Palloni, A., Huangfu, Y., & McEniry, M. C. (2022). Modeling biological age and its link with the aging process. *PNAS Nexus*, 1(3), pgac135.

Bustamante, A. V., Félix-Beltrán, L., Nwadiuko, J., & Ortega, A. N. (2022). Avoiding Medicaid enrollment after the reversal of the changes in the public charge rule among Latino and Asian immigrants. *Health Services Research*.

Fiastrò, A. E., Sanan, S., Jacob-Files, E., Wells, E., Coeytaux, F., Ruben, M. R., ... & Godfrey, E. M. (2022). Remote Delivery in Reproductive Health Care: Operation of Direct-to-Patient Telehealth Medication Abortion Services in Diverse Settings. *The Annals of Family Medicine*, 20(4), 336-342.

Flores Morales, J., Kim, J., & Fong, E. (2022). Peer effects on the educational outcomes of immigrant youth: heterogeneity by generation and school context. *Journal of Ethnic and Migration Studies*, 1-25.

Hoffmann, N. I. (2022). A 'win-win exercise'? The effect of westward migration on educational outcomes of Eastern European children. *Journal of Ethnic and Migration Studies*, 1-23.

Kaplan, M. S., C. Mueller-Williams, A. Goldman-Mellor, S., & Sakai-Bizmark, R. (2022). Changing Trends in Suicide Mortality and Firearm Involvement Among Black Young Adults in the United States, 1999–2019. *Archives of suicide research*, 1-6.

Khan, A. G., Eid, N., Baddah, L., Elabed, L., Makki, M., Tariq, M., ... & Kusunoki, Y. (2022). A Qualitative Study of Arab-American Perspectives on Intimate Partner Violence in Dearborn, Michigan. *Violence Against Women*, 28(10), 2286-2311.

Lleras-Muney, A., Price, J., & Yue, D. (2022). The association between educational attainment and longevity using individual-level data from the 1940 census. *Journal of Health Economics*, 84, 102649.

Londoño-Vélez, J. (2022). The impact of diversity on perceptions of income distribution and preferences for redistribution. *Journal of Public Economics*, 214, 104732.

Macinko, J., Seixas, B. V., de Oliveira, C., & Lima-Costa, M. F. (2022). Private health insurance, healthcare spending and utilization among older adults: Results from the Brazilian Longitudinal Study of Ageing. *The Journal of the Economics of Ageing*, 23, 100397.

Mays, V. M., Echo-Hawk, A., Cochran, S. D., & Akee, R. (2022). Data Equity in American Indian/Alaska Native Populations: Respecting Sovereign Nations' Right to Meaningful and Usable COVID-19 Data. *American journal of public health*, 112(10), 1416–1420.

Morgan, A. C., LaBerge, N., Larremore, D. B., Galesic, M., Brand, J. E., & Clauset, A. (2022). Socioeconomic roots of academic faculty. *Nature Human Behaviour*, 1-9.

Nwadiuko, J., Fredricks, K., Polk, S., Shah, S., Long, J. A., Diaz, C., ... & Yun, K. (2022). Pediatric Hospitalizations from Immigration Detention in Texas, 2015–2018. *The Journal of Pediatrics*, 244, 212-214.

Schwandt, H., Currie, J., Von Wachter, T., Kowarski, J., Chapman, D., & Woolf, S. H. (2022). Changes in the relationship between income and life expectancy before and during the COVID-19 pandemic, California, 2015-2021. *JAMA*, 328(4), 360-366.

Seligman, B., Charest, B., Ho, Y. L., Gerlovin, H., Ward, R. E., Cho, K., ... & Orkaby, A. R. (2022). 30-day Mortality Following COVID-19 and Influenza Hospitalization Among US Veterans Aged 65 and Older. *Journal of the American Geriatrics Society*.

Suchinaraset, M., Ling, I., Gao, L., Chavarin, J., & Gee, G. C. (2022). The association between deferred action for childhood arrivals, health access, and mental health: the role of discrimination, medical mistrust, and stigma. *Ethnicity & Health*, 27(5), 1075-1087.

Follow us on social media!

